

Tokyo CA Clinic

Main Strategy of our Immunotherapy

- Priming Phase : making successful induction of cancer-specific CTL
- Following-up Phase : maintaining immune effector response and preventing rebound

In both phases, following key components should be combined according to the patients condition and chronological changes

Key Components of our Protocols

- a. Controlling innate immune system
- b. Controlling cancer microenvironment (CME)
- c. Low dose radiation
-increasing both cancer cells immunogenicity and systemic response
- d. Controlling adaptive immunity : Induction of cancer-specific CTL
- e. Prevention of CTL exhaustion



Cell Processing Lab

- FACS
- ELISA
- PCR



Media

- ECONOMIST
- WSJ

A

INNATE
IMMUNITY
CONTROL

B

CME
CONTROL

C

LOW DOSE
RADIATION

D

CTL
INDUCTION

E

PREVENTION of
T CELL
EXHAUSTION

Cancer is a disease of molecular evolution and immune dysfunction.....

Cancer Immunology and Immunotherapy Volume 1 p.1



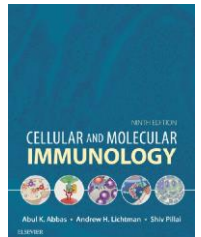
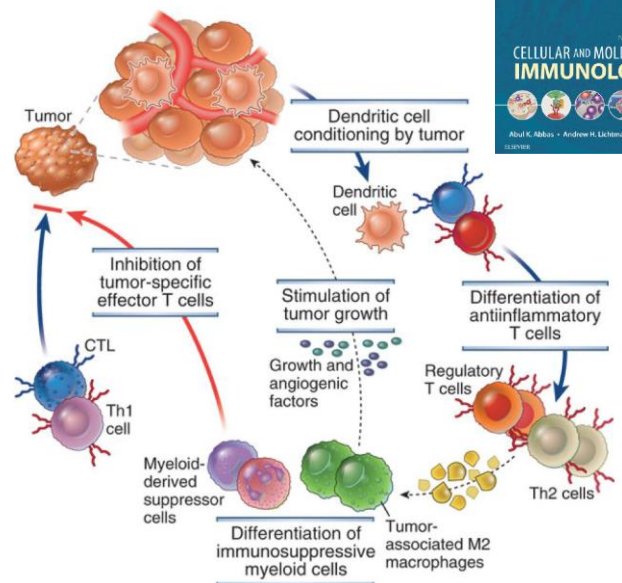
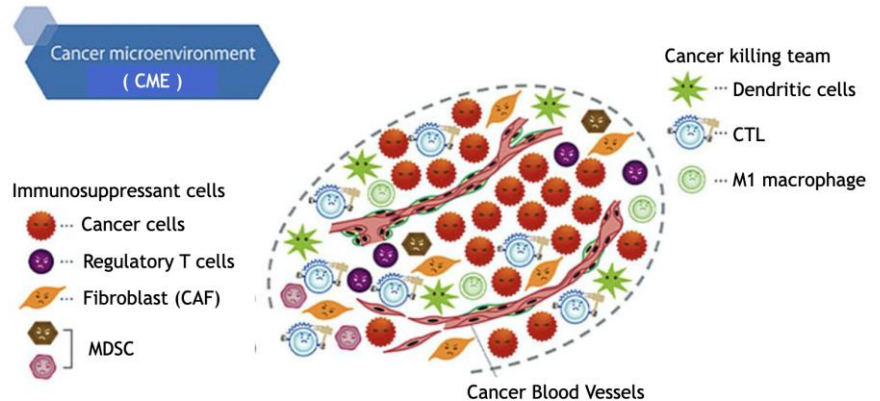
Importance of Cancer Micro-Environment

To save patients ...

There are many immunosuppressant cells in the CME

Without taking care of CME,
it is impossible to save patients
with advanced cancer.

We have to take into account of this fact.



General Information



4F HAPPO-EN URBAN SQUARE
4-9-19 Shirokanedai, Minato-ku,
Tokyo 108-0071
TEL +81-3-6407-9147 FAX +81-3-6407-9148

Hours of Operation

Tuesday-Saturday : 10:00 a.m. – 5:00 p.m.
Closed on Sundays, Mondays, Thursdays



Lecture on Webex

Title: Novel immunotherapy Treatment of Cancer

University of Texas, Health Science Center at Houston
Grand Round Series on April 18th, 2022

Invitation letter



The University of Texas
Health Science Center at Houston
Adan Rios, MD
Professor
Department of Internal Medicine
Division of Oncology

McGovern
Medical School

6400 Fannin Street, 29th Floor
Houston, Texas 77030
Telephone: 713-704-3939
Fax : 713-704-4941
Cell : 713-829-8153
Adan.Rios@uth.tmc.edu

March 28, 2022.

Dr. Osamu Kimura.
Tokyo CA Clinic
Nikkei, My Way.
Via: E-mail

Dear Professor Kimura:

Thank you so much for all the care you have provided to our common Houston's patient. The results of your treatment are nothing but spectacular.

It is our privilege, honor, and an opportunity for our division to invite you as a speaker in our Grand Round Series on April 18, 2022, at 08: 00A.M, Houston time (SCT).

Topic: 'Novel immunotherapy treatment of cancer'. Please feel free to change the title as you may deem appropriate.

The Oncology Division Grand Rounds are by invitation only and occur via WebEx.

They are accredited by the CME Agency used by the School, the Baylor CME Department.

Should you decide to accept our invitation you will receive a separate communication from our office regarding the details necessary to complete the process. We would like to have your answer within the next four days to have all the necessary time to do an adequate promotion of your lecture at the school.

In the meantime, please receive on behalf of our division, our most sincere expressions of gratitude for your consideration toward our Program.

Kindly,

Adan Rios MD

Lecture Presentation



Novel Immunotherapy Treatment of Cancer

Osamu Kimura, Taizo Furukawa, Toshikazu Yoshikawa

Tokyo CA Clinic, Tokyo, Japan

UTHealth Hematology/Oncology Grand Rounds : Apr. 18th, 2022